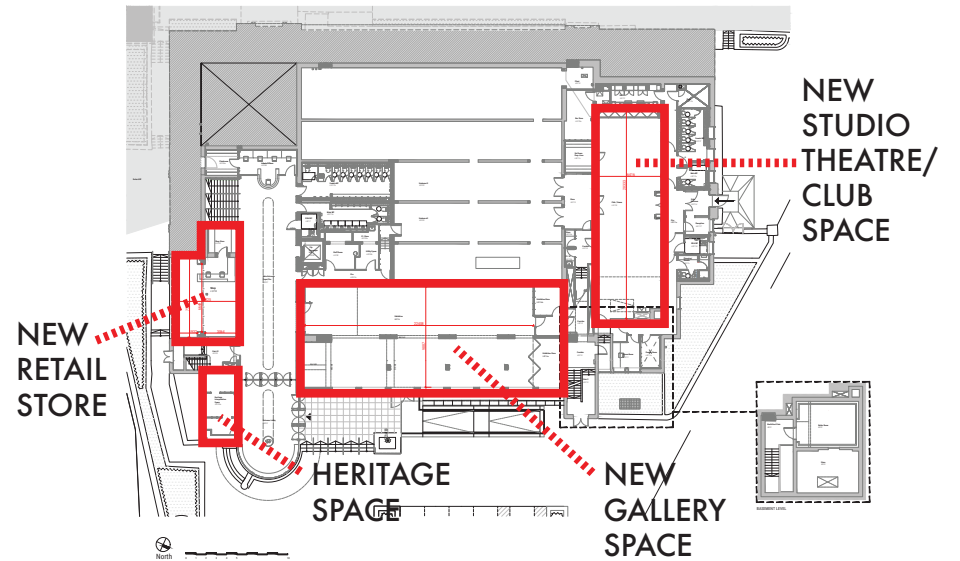
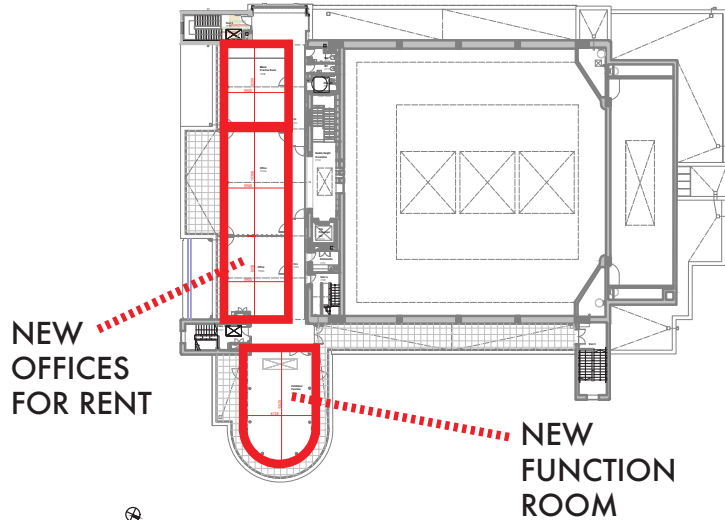


## PAVILION UPPER GROUND FLOOR

Restoration Architect: Elder & Cannon



## PAVILION LOWER GROUND FLOOR



## PAVILION FIRST FLOOR

## Restoration & Transformation

The Pavilion is a striking, three-story grade A listed building that's stands out on the island of Bute's seafront providing a range of modern, flexible, and fully accessible multi purpose space and amenities suitable for just about any size and shape of public or business gathering, with few limits on the creativity or inventiveness on how they can be used. It is an exceptional example of a unique style of modern architecture, visitor magnet and thriving community hub offering a combination of inspiring and adaptive spaces for **exploration, learning and entertainment.**

*Janice Forsyth* Janice Forsyth, Chair of Rothesay Pavilion Charity

Join our professional network 

Making the world a better place

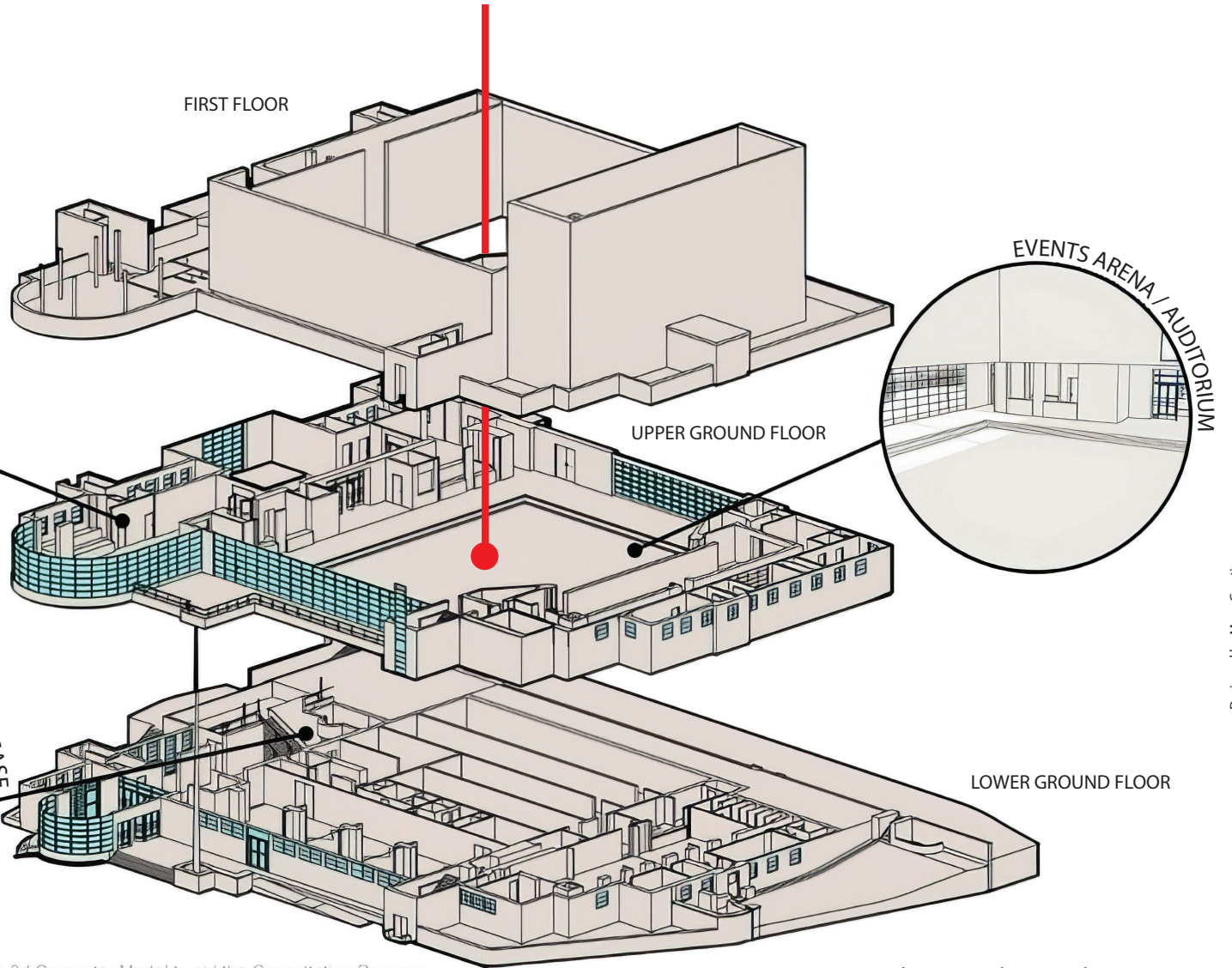
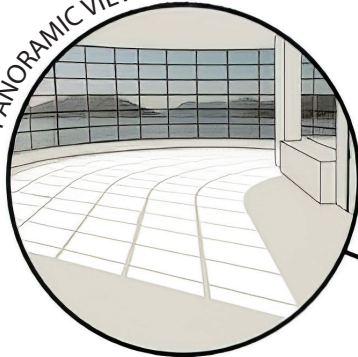




**ROTHESAY  
PAVILION**

**Events arena/auditorium & stage** (8,956 sqft / 832 m<sup>2</sup>) – the biggest gathering space and stage includes the original sprung wooden dance floors and a state-of-the-art concert audio system with upgraded backstage facilities. Perfect for large scale performance exhibitions, conferences, product launches, film screenings, festivals, indoor markets, civic celebrations and family-friendly community leisure activities.

PANORAMIC VIEW CAFE



SCAN ME

Join our professional network — people passionate about making the world a better place for generations to come.

Interactive 3d Computer Model to aid the Consultation Process  
A complex building made easier to understand

[www.rothesaypavilion.co.uk](http://www.rothesaypavilion.co.uk)